



208-894 | VERNON
AVE

SAANICH EAST - SWAN LAKE | 2 BED + 2 BATH | 933 SF

Outstanding Value at Chelsea Green

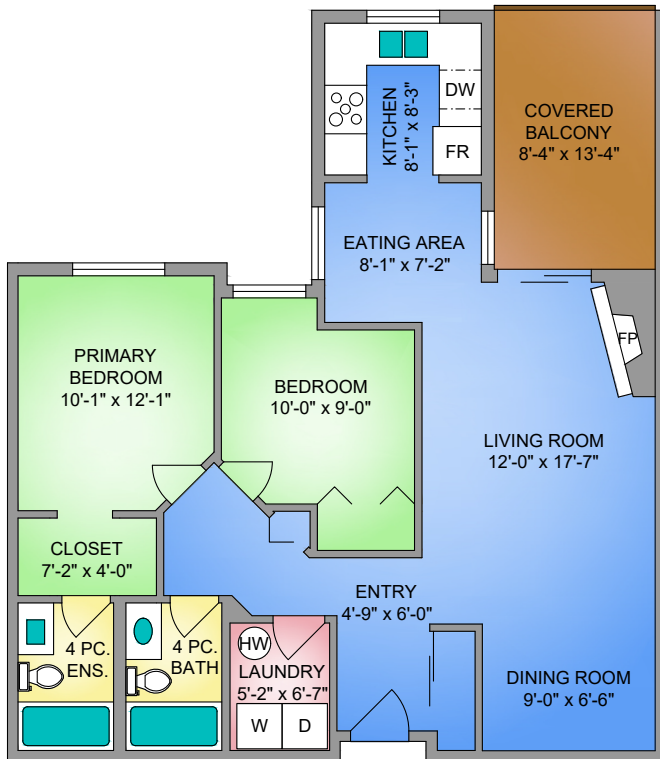
This well-designed 2-bedroom, 2-bathroom home offers one of the best opportunities to own in the Chelsea Green community and represents one of the best values available in the building. Centrally located, you are just minutes from the fantastic amenities of Tillicum, Mayfair, and Uptown Shopping Centres, offering convenient access to Whole Foods, Save-On-Foods, Walmart, restaurants, shops, and everyday essentials. Commuting is simple with nearby transit providing direct routes to UVic and downtown Victoria, while outdoor lovers will appreciate being close to Swan Lake and the Galloping Goose Trail. Inside, the thoughtful layout provides comfortable living with a bright living room featuring a cozy gas fireplace, a dedicated dining area, and a functional kitchen with an additional eating nook. Two spacious bedrooms and two full bathrooms create flexibility for homeowners, downsizers, or investors alike. Chelsea Green is a well-managed strata offering secure underground parking, storage, bike parking, and ample visitor parking. Pet friendly, rentals welcome, BBQ's permitted, and no age restrictions make this a highly versatile property. A fantastic opportunity for buyers seeking space, convenience, and exceptional value in a central Victoria location.

JODIE FARUP &
PERSONAL REAL ESTATE CORPORATION

CHRIS SCOTT
PERSONAL REAL ESTATE CORPORATION

RE/MAX
CAMOSUN
Each Office Independently Owned and Operated


FARUPSCOTT
GROUP



UNIT 208 - 894 VERNON AVENUE		
MARCH 11, 2026		
PREPARED FOR THE EXCLUSIVE USE OF FARUP - SCOTT GROUP		
PLANS MAY NOT BE 100% ACCURATE. IF CRITICAL BUYER TO VERIFY.		
AREA (SQ. FT.)		
FLOOR	FINISHED	BALCONY
SECOND	933	111

JODIE FARUP & CHRIS SCOTT

PERSONAL REAL ESTATE CORPORATION

PERSONAL REAL ESTATE CORPORATION

RE/MAX Camosun | 250 370 7788

jodie@farupscott.com | chris@farupscott.com

www.farupscott.com

RE/MAX
CAMOSUN
Each Office Independently Owned and Operated



FARUPSCOTT
GROUP